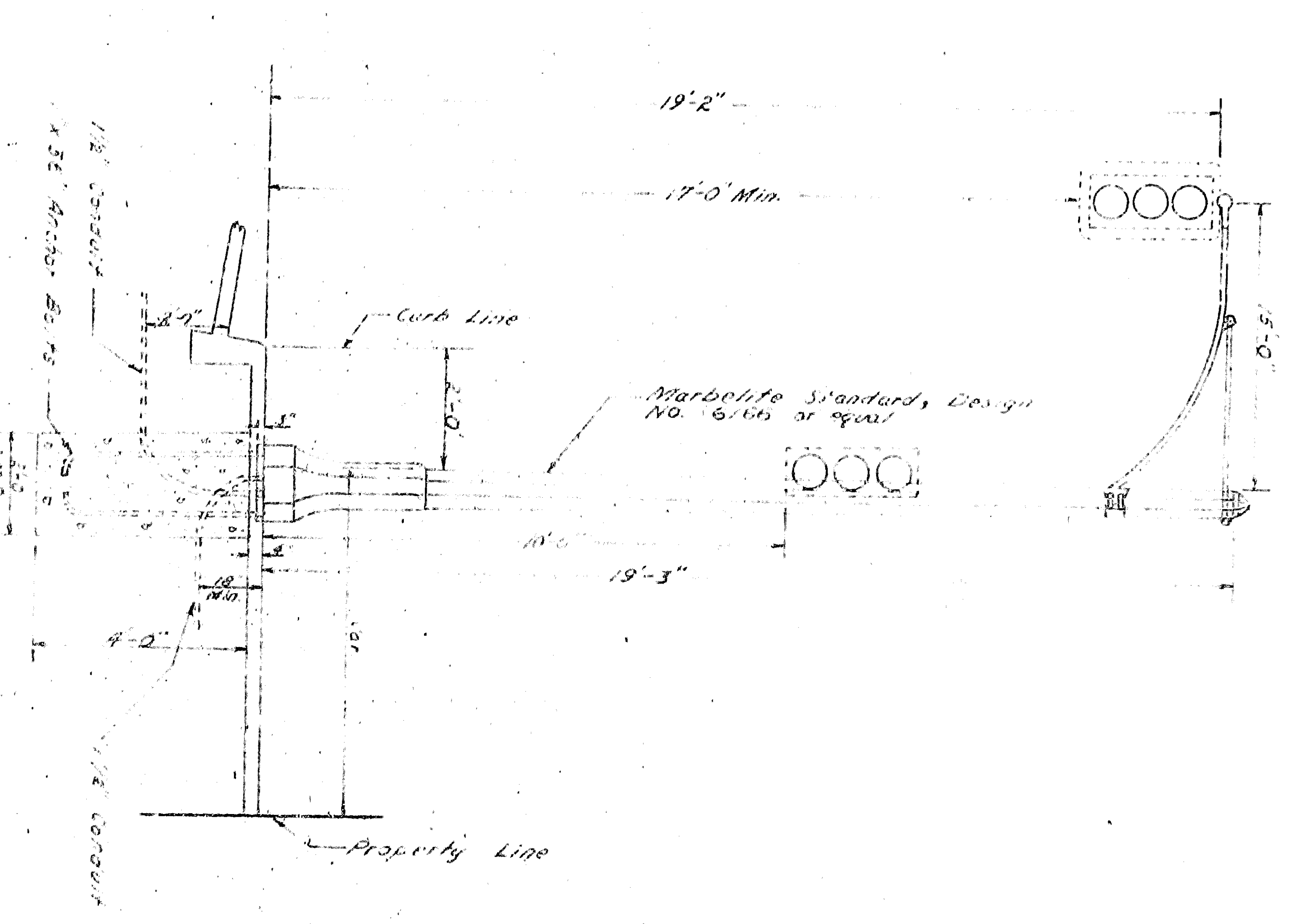
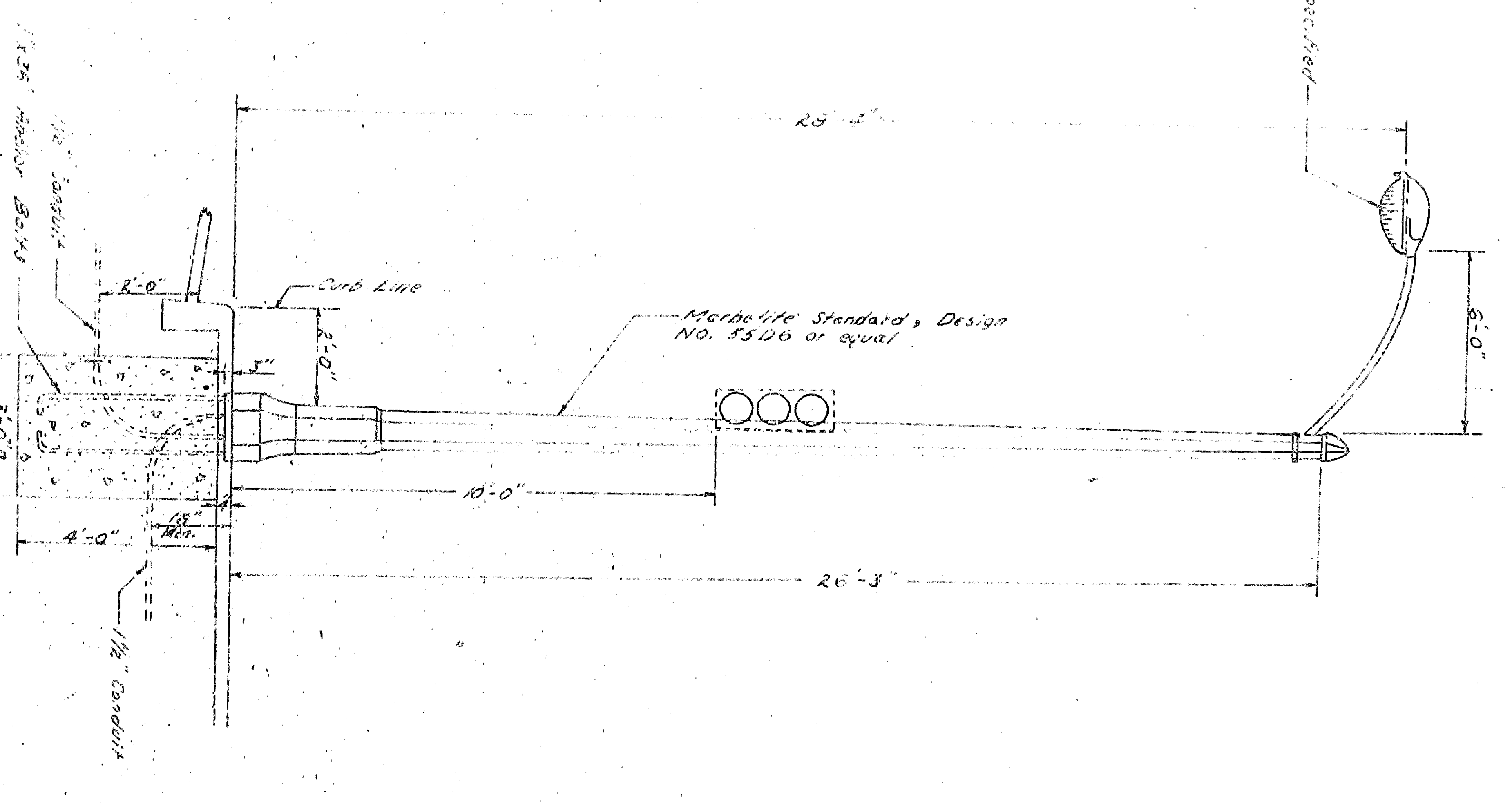


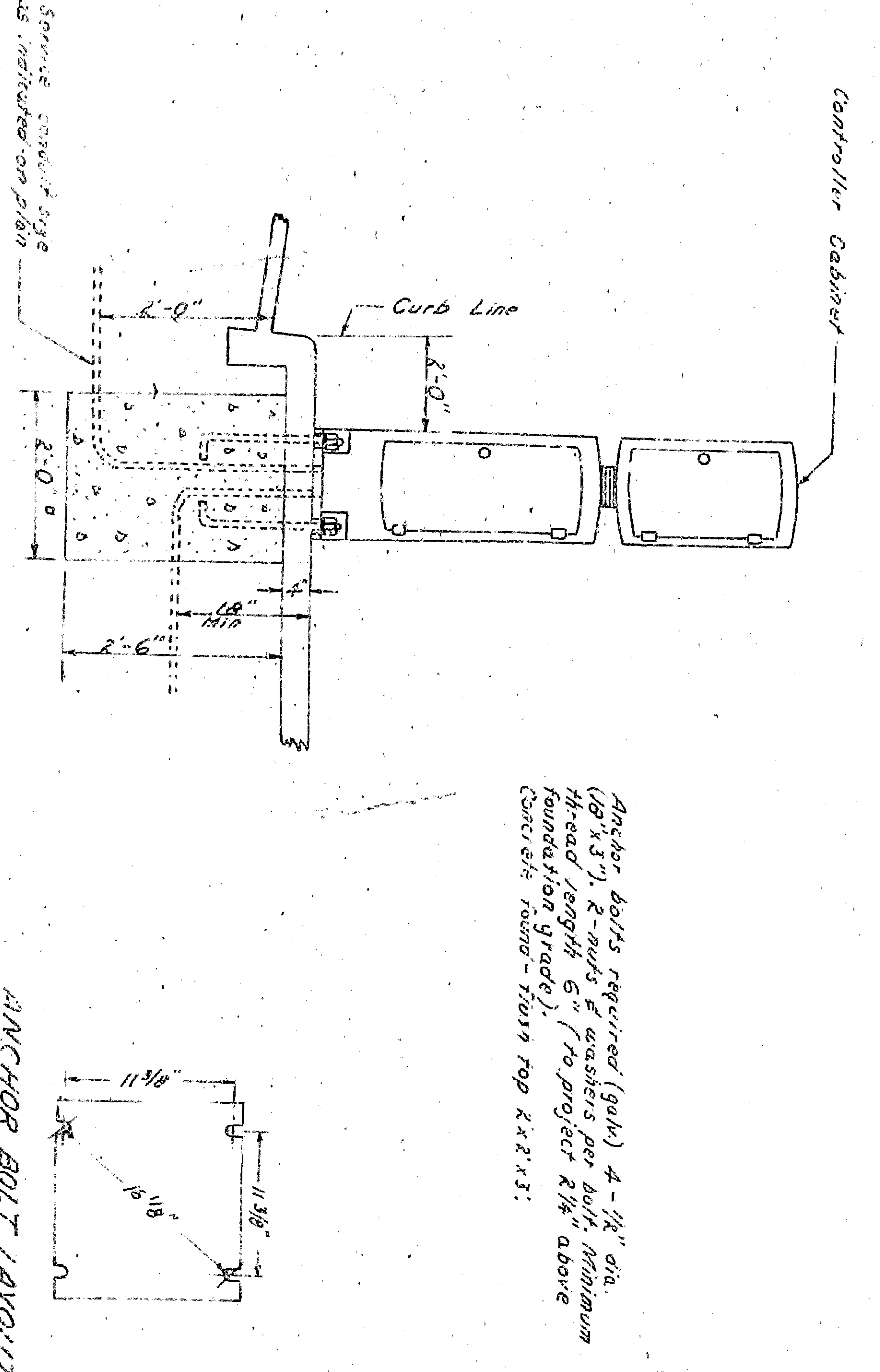
TYPE III(c) STANDARD, similar to Type II(c) Standard, except luminaire is 18" dia.



TYPE II(c) STANDARD

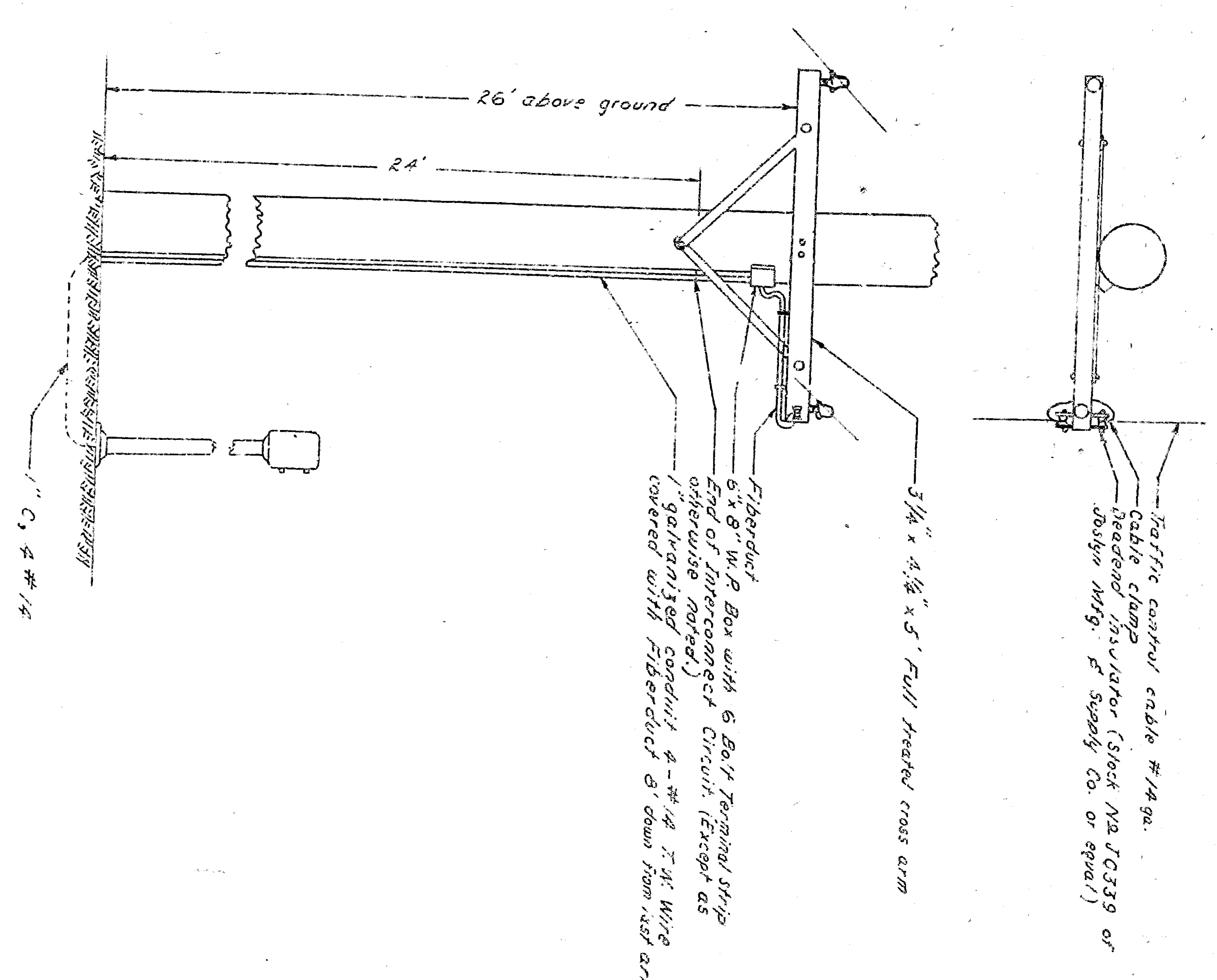


TYPE I(c) STANDARD, similar to Type II(c) Standard, except luminaire is 18" dia.



SQUARE PEDESTAL CABINET & BASE

INTERCONNECT DETAILS



Anchor Bolt Layout
 10'-0" dia.
 26'-0" dia.
 24'-0" dia.
 10'-0" dia.

ACCEPTED BY: <i>[Signature]</i> DIRECTOR OF ENGINEERING	SIGNATURE OF: <i>[Signature]</i> REGISTERED CIVIL ENGINEER NO. 11831	REFERENCE: DRAWN BY: CHECKED BY:	DRAWING NO. 3526 SHEET 4 OF 4 SHEETS
REDEVELOPMENT AGENCY OF THE CITY OF SAN BERNARDINO MEADOWBROOK PROJECT AREA NO. 1 CALIF RFD		DEPARTMENT OF ENGINEERING CITY OF SAN BERNARDINO STREET LIGHT DETAILS	